

## Registered Actively Seeking Work March 2013

Statistics Unit: [www.gov.je/statistics](http://www.gov.je/statistics)

### Summary

On 31 March 2013:

- Both the **seasonally adjusted**<sup>1</sup> and non-seasonally adjusted number of people registered as actively seeking work (ASW) in Jersey were at the highest levels recorded to date<sup>2</sup>;
- on a **seasonally adjusted** basis, the total number of people registered as actively seeking work (ASW) in Jersey was<sup>3</sup>:
  - 100 higher than a month earlier, in February 2013;
  - 80 higher than the average for the preceding three months;
- the non-seasonally adjusted ASW total was 2,050; this latest monthly total is:
  - 20 higher than a month earlier, in February 2013;
  - 240 higher than a year earlier, in March 2012;
  - almost double that of four years ago, in March 2009;
- **long-term registered ASW** (registered for more than twelve months) accounted for more than a sixth of total ASW and was at the highest level recorded to date;
- 290 **teenagers aged 16-19 years** were registered as ASW, 30 fewer than a month earlier; 110 teenagers were on the Advance to Work scheme.

### Introduction

Data on people registered as actively seeking work in Jersey is compiled and administered by the Social Security Department. The Statistics Unit independently analyses this anonymised data and publishes a monthly report.

When interpreting the numbers presented, it should be kept in mind that there is no legal requirement for all unemployed residents of Jersey to register as actively seeking work (ASW) with the Social Security Department. The numbers shown constitute an informative set of indicators of the level and characteristics of individuals actively seeking work in the Island at the specified point in time.

The internationally comparable unemployment rate (as defined by the International Labour Organisation, ILO) is measured for Jersey through the Annual Social Survey or the Census. The ILO unemployment rate on 27 March 2011, measured by the 2011 Census, was 4.7%; this rate corresponds to 2,570 people being unemployed at that point in time.

The numbers of people registered as ASW include people who are on the Advance to Work, Advance Plus and Workwise schemes (see Note 1). The ASW figure will also include individuals who are working less than the 35 hours a week required under the terms of Income support; such individuals will be working and actively seeking working simultaneously.

<sup>1</sup> Seasonal adjustment is a statistical technique which enables examination of the underlying behaviour in a series of data by removing variations associated with the time of year, e.g. Christmas, Easter, academic year.

<sup>2</sup> When placing the figures contained in this report in a historical context, it should be recognised that there have been significant changes in the criteria relating to registered ASW in Jersey in recent years. In particular, the introduction of Income Support in 2008 has led to a higher proportion of individuals who were actively seeking work being included in the registered figures.

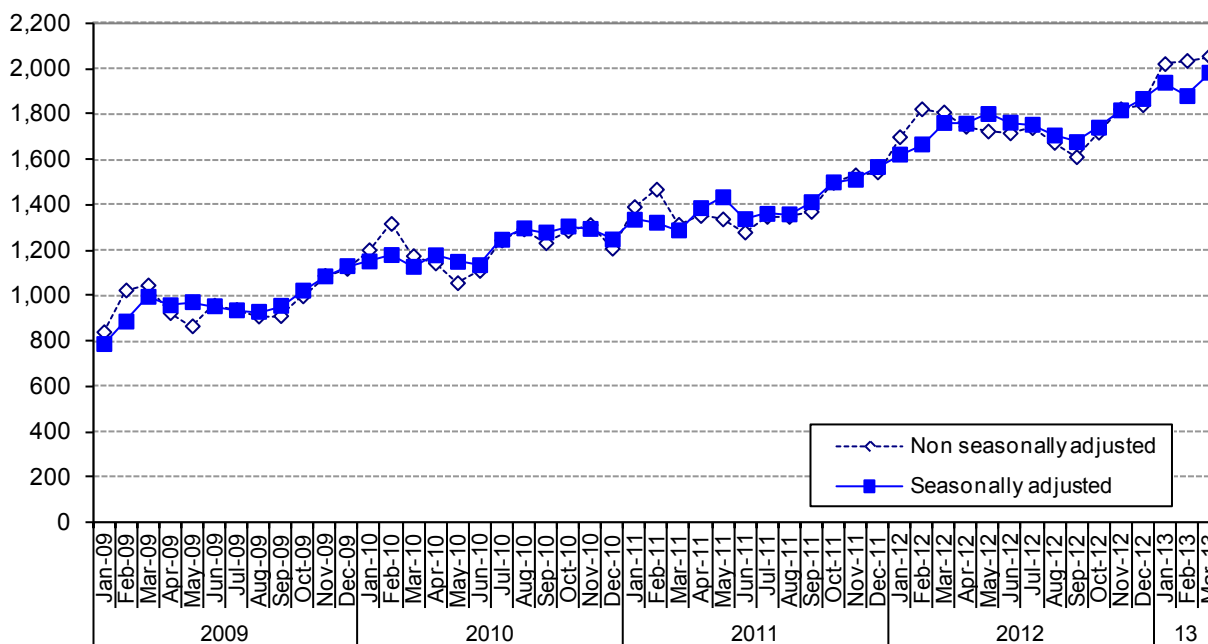
<sup>3</sup> ASW numbers presented in this report are rounded independently to the nearest 10.

## Registered Actively Seeking Work

On 31 March 2013, 2,050 people were registered with the Social Security Department as actively seeking work (ASW). Almost three-quarters (71%) of people registered as ASW on this date (1,460 individuals) were receiving Income Support<sup>4</sup>.

Figure 1 shows the total number of people registered as ASW at the end of each month since January 2009 (monthly data are shown in Appendix Table A1). The total number registered in March 2013 was the highest recorded to date, and 20 higher than a month earlier (February 2013); 240 higher than a year earlier (March 2012); and almost double that of four years earlier (March 2009).

**Figure 1 – Total number of individuals registered as ASW, Jan 2009 – Mar 2013**



The seasonally adjusted series of the total registered as ASW, in which seasonal and calendar effects are removed, is also shown on Figure 1. From this perspective, the total number of people registered as ASW in Jersey in March 2013 was:

- 100 higher than a month earlier (in February 2013);
- 80 higher than the mean for the preceding three-month period, December 2012 to February 2013.

## Registered ASW by age

On 31 March 2013, more than a quarter (27%) of all people registered as ASW were under the age of 25; around one in seven (14%) of the total were teenagers aged 16-19 years.

Figure 2 shows the numbers registered as ASW by age of individuals for the last five months, from November 2012 to March 2013.

In the latest month, all age groups between 25 and 39 years of age and for those aged above 50 years recorded increases compared to the previous month, recording the highest levels seen to date for each of these age groups. The largest increase was recorded for 35-39 year olds, seeing an increase of 30 in the latest month. In contrast, the number of teenagers registered as ASW was 30 lower than the previous month, February 2013.

<sup>4</sup> The total number of adults receiving Income Support and not working will be greater than this figure, which represents the number of people receiving Income Support who were registered as ASW on 31 March 2013.

**Figure 2 – Individuals registered as ASW by age, Nov 2012 – Mar 2013**

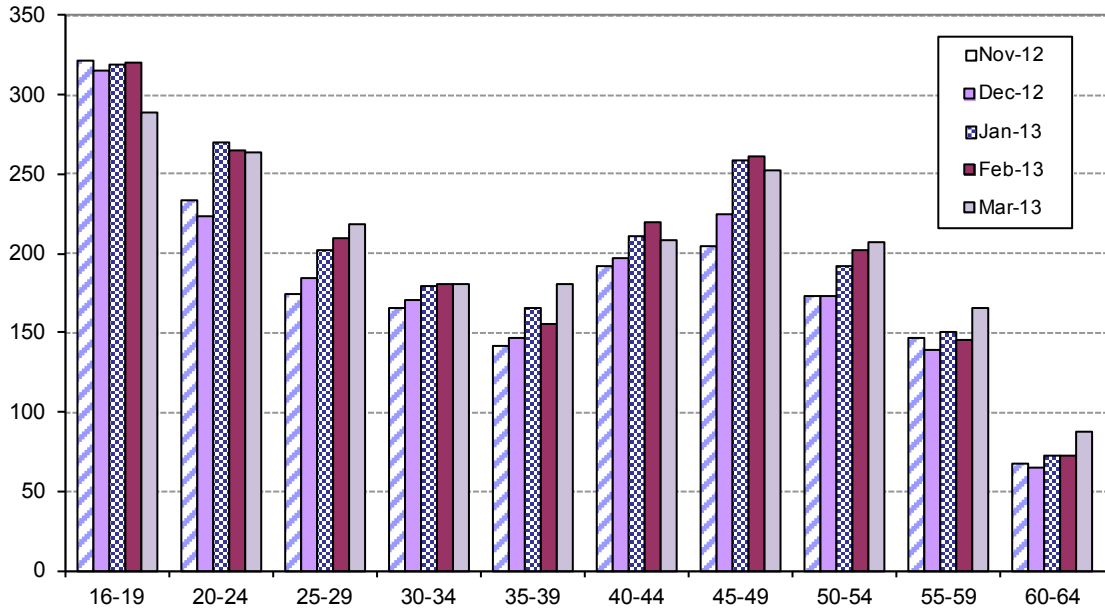
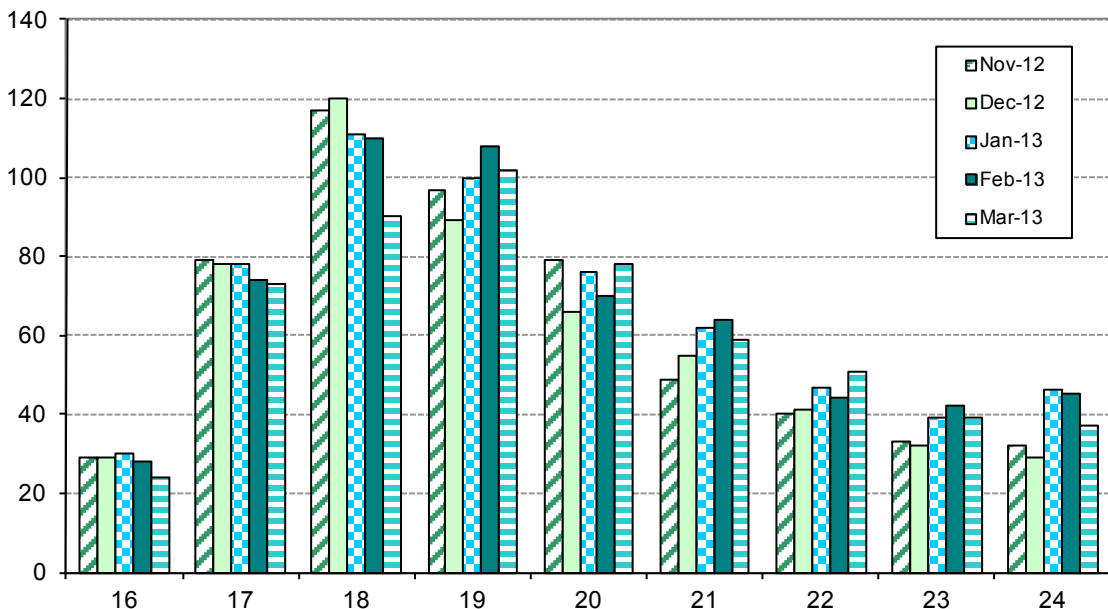


Figure 3 shows the age distribution for people under 25 years of age who were registered as ASW in the latest five months, from November 2012 to March 2013. As in previous recent months, the greatest numbers of people registered as ASW at the end of March 2013 were for ages 18 and 19 years<sup>5</sup>.

Of the 290 teenagers (aged 16-19 years) who were registered as ASW at the end of March 2013, 110 were on the Advance to Work scheme.

**Figure 3 – Individuals under the age of 25 registered as ASW, Nov 2012 – Mar 2013**

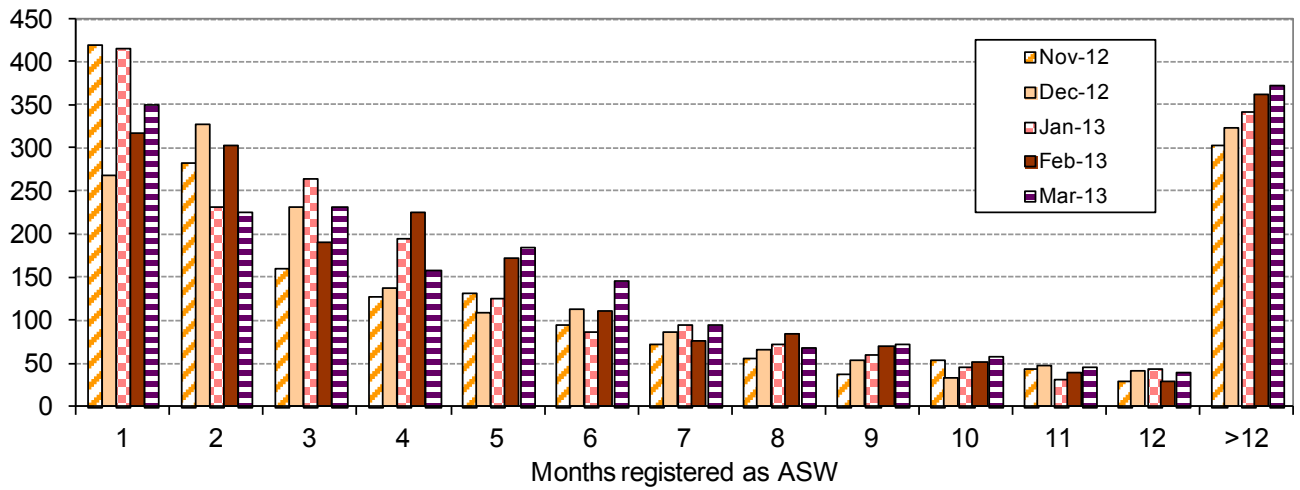


<sup>5</sup> It should be acknowledged that a change to the Income Support criteria in September 2011 meant that individuals aged 16-18 who do not live in an Income Support household no longer receive the adult component of Income Support in their own right and as a result are not required to register as ASW.

### Duration as ASW

Two-fifths (39%) of all people registered as ASW on 31 March 2013 had been registered for three months or less – see Figure 4.

**Figure 4 – Registered ASW by length of period registered (months<sup>6</sup>), Nov 2012 – Mar 2013**



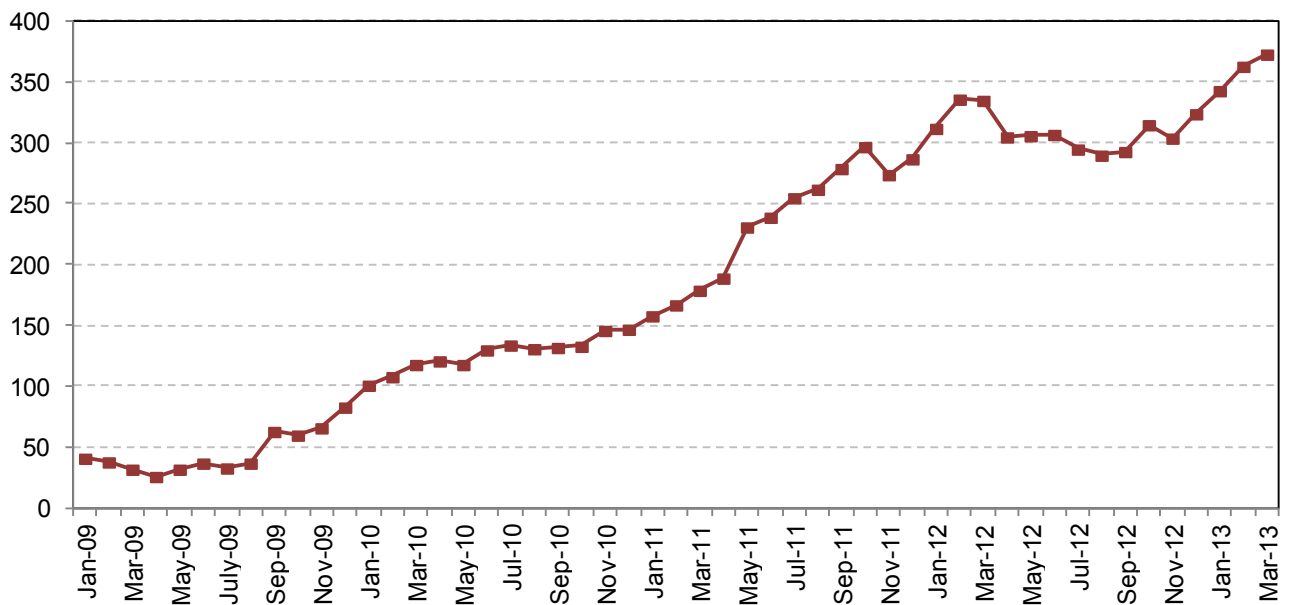
350 people had registered as ASW in the latest month, about 30 greater than in February 2013. The latest number of new registrants is 90 greater than in the corresponding month of the previous year, March 2012, and 120 greater than in March 2011.

### Long-term ASW

On 31 March 2013, there were 370 people who had been registered as ASW for more than twelve months. This latest number of long-term ASW is 10 higher than in February 2013 and is the highest number recorded to date (see Figure 5).

Long-term ASW accounted for more than a sixth (18%) of the latest ASW total.

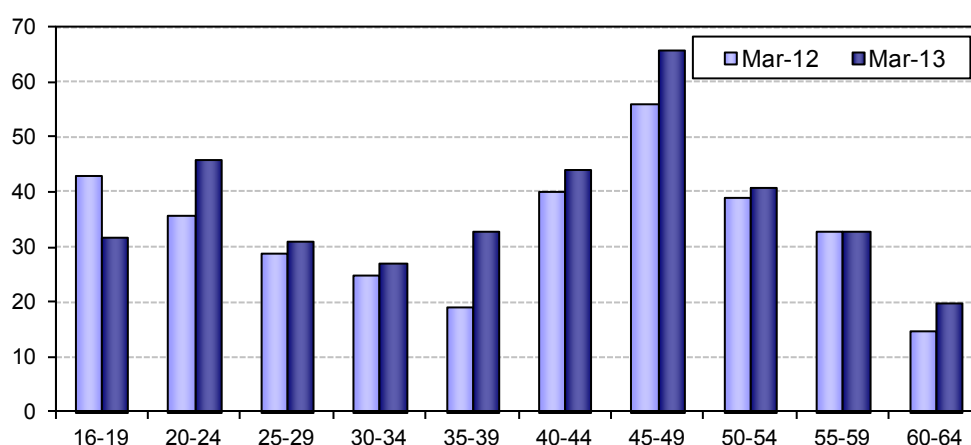
**Figure 5 – Long-term ASW, Jan 2009 – Mar 2013**



<sup>6</sup> The ASW figures from June 2012 include a revision to the calculation of the length of time for which an individual has been registered as ASW. Previously, the duration had been calculated using the number of weeks an individual had been registered as ASW, whereas from June 2012 the calculation of duration is based on calendar months.

Figure 6 shows the age distribution of the long-term ASW in March 2013 and twelve months earlier, in March 2012.

**Figure 6 – Long-term ASW by age, Mar 2012 and Mar 2013**



People under 25 years of age accounted for around a quarter of the total number of long-term ASW in March 2012 and March 2013; people aged 40 or above accounted for more than three-fifths of the total number of long-term ASW in March 2012 and March 2013.

A similar number of people aged under 25 were long-term ASW in March 2012 and in March 2013; in contrast, the number of people aged 40 or above who were long-term ASW increased by 20 during the same period.

## Industry

Individuals working in some industries of the economy, notably in the Finance sector, often seek employment through private agencies and do not register with the Social Security Department. Such industries will, therefore, tend to be under-represented in the ASW numbers.

The last industry of employment was recorded for almost nine out of ten people registered as ASW in March 2013:

- around one in five were previously employed in 'Retail and Wholesale, Motor repairs and sales' (19%) or in 'Miscellaneous professional and domestic services' (19%);
- one in six were previously employed in 'Construction and allied trades' (16%);
- around one in nine were employed in 'Hotels, restaurants, pubs and clubs' (11%).

## Notes

1. The Advance to Work scheme provides 16 to 19 year olds who have left school or college with a relevant work placement and training. Advance Plus provides over 20 year olds with a relevant work placement and training.

Workwise comprises of a team of advisors in the Social Security Department who help people with special employment needs, or having particular employment barriers, to prepare for and seek suitable work. Since October 2010, a system enabling more complete counting of individuals on Workwise placements has been implemented.

## Appendix

Table A1: Number of individuals registered as ASW, Jan 2009 – Mar 2013<sup>7</sup>

		Male	Female	Total	Seasonally adjusted total
<b>2009</b>	Jan	570	270	840	790
	Feb	700	320	1,020	890
	Mar	720	330	1,050	1,000
	Apr	620	300	920	960
	May	560	300	870	970
	Jun	630	330	960	950
	Jul	620	320	940	940
	Aug	580	320	910	930
	Sep	580	330	910	960
	Oct	650	350	1,000	1,020
	Nov	700	390	1,090	1,090
	Dec	700	420	1,120	1,130
<b>2010</b>	Jan	770	440	1,200	1,150
	Feb	810	510	1,320	1,180
	Mar	720	450	1,170	1,130
	Apr	710	430	1,140	1,180
	May	670	390	1,060	1,150
	Jun	690	420	1,110	1,130
	Jul	760	490	1,240	1,250
	Aug	810	490	1,290	1,300
	Sep	770	460	1,230	1,280
	Oct	840	450	1,290	1,300
	Nov	870	440	1,310	1,290
	Dec	800	410	1,210	1,250

		Male	Female	Total	Seasonally adjusted total
<b>2011</b>	Jan	910	480	1,390	1,330
	Feb	960	510	1,470	1,320
	Mar	850	460	1,310	1,290
	Apr	870	490	1,350	1,390
	May	820	520	1,340	1,430
	Jun	780	500	1,280	1,340
	Jul	800	550	1,350	1,360
	Aug	820	530	1,350	1,360
	Sep	850	520	1,370	1,410
	Oct	920	570	1,500	1,500
	Nov	960	580	1,530	1,510
	Dec	960	580	1,540	1,570
<b>2012</b>	Jan	1,050	650	1,700	1,620
	Feb	1,130	690	1,820	1,670
	Mar	1,100	700	1,810	1,760
	Apr	1,060	680	1,740	1,760
	May	1,040	680	1,720	1,800
	Jun	1,020	700	1,720	1,760
	Jul	1,020	720	1,740	1,750
	Aug	1,020	650	1,670	1,710
	Sep	970	650	1,610	1,680
	Oct	1,020	700	1,720	1,740
	Nov	1,090	730	1,820	1,820
	Dec	1,100	740	1,840	1,870
<b>2013</b>	Jan	1,210	810	2,020	1,940
	Feb	1,210	820	2,030	1,880
	Mar	1,230	820	2,050	1,980

<sup>7</sup> Numbers are rounded independently to the nearest 10; hence components may not sum to totals.